

NEWSLETTER

NOVEMBER 2017



WOODCHURCH
COMMUNITY
INFORMATION
CENTRE

Contact Us

Tel: 01233 861381

Email: enquiries@woodchurchinfo.com

www.woodchurchinfo.com

Follow us on twitter: [@woodchurchinfo](https://twitter.com/woodchurchinfo)

Contact the oil syndicate:

Richard 07786066117

woodchurchoilssyndicate@outlook.com

WOODCHURCH KEY EVENTS IN NOVEMBER

All Saints Church, Woodchurch - Coffee Call every Friday at 9.00 to 11am [term time] 10.00 to 12 noon [other times]. Drinks, bacon sarnies, home-made cakes and chats with friends. All welcome.

All Saints Church, Woodchurch - Autumn Market on 4th November 10 to 12pm.

Woodchurch Film Society presents 'Me before You' (2016 12A) 10th November in Woodchurch Memorial Hall. Doors open 7pm for 7.30pm start.

Coffee Morning at Woodchurch Memorial Hall 11th November 11am-1pm.

Woodchurch WI on 14th November - talk and demonstration of Woodturning by Bob Cooper in the Woodchurch Memorial Hall at 7.15pm.

Christmas Gift Market 18th & 19th November - see page 2.

All Saints Church, Woodchurch - church Cafe Style on 19th November at 5pm.

CARM's Meeting Point at the Bonny Cravat, Woodchurch, will be on the 20th November at the Bonny Cravat Pub and a speaker from the Centre for Independent Living, Kent, will be giving a talk about how to remain independent in your home for longer?

Ashford Astronomical Society meeting at Woodchurch Memorial Hall on 24th November at 7.30pm.

Advance Notice

Kent Police Male Voice Choir Concert at St Mary the Virgin Church, High Halden on 9th December at 7pm for 7.30pm. Tickets £10 - Mrs Carol Serginson 01233 850574.

Christmas Tree Festival (sponsored by the Information Centre) 2nd & 3rd December - see page 2.

Go to the "Events" tab on www.woodchurchinfo.com - for the full diary of events and meetings in the area

SNIPPETS

Congratulations to member business, Dolmen Construction, who have won a contract to supply carpentry services to Canterbury Cathedral

Southern Housing has bought the housing site between 82-120 Front Road. More about their plans soon

IN ASSOCIATION WITH

HOBBS · PARKER
Estate Agents



01233 861381

Photocopying and Printing at the Woodchurch Community Information Centre.

Black and white or colour copies are available.

Members:

Black and white per copy 4p
Colour per copy 9p

Non-members:

Black and white per copy 9p
Colour per copy 14p.

Promoting local businesses, clubs and societies at Woodchurchinfo.com

QUALITY LOCAL FIREWOOD

Fully seasoned oak, hornbeam and chestnut for log burners.
Free delivery of full and half loads in Transit Tipper and bags of logs for collection.



Call 01233 860022
07804 881461
The Woodland Centre,
Warehorne Road,
Woodchurch
Situated next door to
the Rare Breeds.

Local Events at woodchurchinfo.com Local Attractions at woodchurchinfo.com

Local Businesses, Clubs & Societies all in one place at woodchurchinfo.com

SNIPPETS

Just a reminder that we still have a range of offers/discounts available from member businesses. Pop in to the Information Centre for more details.

Gusbourne now offer guided tours of the vineyard and winery, with an opportunity to taste the whole Gusbourne range, plus a few exclusives, in the newly opened tasting room. The tour and tasting experience is available Wednesday to Sunday throughout the year, and on bank holidays.

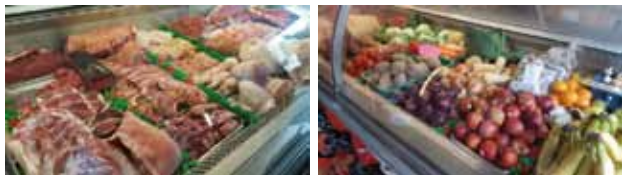
Any Items for the newsletter- please contact the Woodchurch Community Information Centre
Tel: 01233 861381 Email: enquiries@woodchurchinfo.com

Woodchurch Community Information Centre

Carley Family Butchers Farm Shop

A well-stocked traditional butchers and farm shop.

01233 861395



New Member

Woodchurch is lucky to have its own traditional butchers and farm shop. It is owned by Mark Carley who also runs a small livestock farm in Woodchurch. The meat is traditionally farmed, hung and displayed. There is beef, pork, lamb, chicken, game and turkey plus bacon, sausages and burgers. The shop also sells local free-range eggs, milk, cheese and a good selection of fresh vegetables plus other items such as bread, cakes, tinned goods, fruit juices, etc. ORDER NOW! FRESH FARM-REARED, FREE-RANGE TURKEYS, BONED OUT BREAST OR WHOLE, ARE AVAILABLE FOR CHRISTMAS

CHRISTMAS GIFT MARKET

Sat 18th & Sun 19th November 10am - 4pm

RARE BREEDS CENTRE Woodchurch (B2067)

Farm admission not necessary

Toys sweets crafts gifts jewellery

Enquires 01233 732684



The Christmas Trees have been sponsored by the Woodchurch Community Information Centre

CHRISTMAS TREE FESTIVAL
SATURDAY & SUNDAY
2nd & 3rd DECEMBER 2017
10am - 5pm on both days
at All Saints Church, Woodchurch
 There will be approximately 20 trees decorated by various groups in the village, so the church will look amazing.
 Morning coffee, homemade soup, jacket potatoes and afternoon tea and cake will be available for visitors.
 All money raised will be shared between the Fitzroy Leo Trust, a residential home in Woodchurch for adults with learning disabilities, and All Saints Church, for the ongoing upkeep of this lovely church.

Woodchurch Surgery Patients Participation Group



If you are interested in our local Surgery and the services it provides do come along and join us. We are an informal Group which meets every two months at the Bonny Cravat when we have a guest speaker on mainly medical topics of interest and are kept in touch with developments at the Surgery by Helen Fox, our Practice Manager. Our talks in the past have covered such areas as Diabetes, Macular Degeneration and Cataracts, Arthritis, the Pilgrims Hospice and even demonstrations by the Fire and Rescue Service on resuscitation and coping with accidents. Our next meeting will be on Monday, November 27th at 6 pm when one of our members, Chris Stafford, who was unlucky enough to be rushed to hospital in France with a haematoma on his leg, will tell us about his experiences under the title 'Forty-eight hours in French A & E - the differences between France and the UK'. This should prove a fascinating topic and any patient of the Surgery is welcome to come and hear Chris' talk - you don't have to be a member but we hope you will be encouraged to join!

For more information about the Group contact:- Charles Vertue (Chairman) on 01233 860439 or Helen Fox at the Surgery

Forestbabes

Woodland Playgroup

play | explore | connect

Enjoy time with your little one in a beautiful woodland setting in the heart of Kent. With songs, stories, play and adventure led by a qualified Level 3 Forest School practitioner.

- When: Tuesday mornings 10.00am to 11.30am (term time only)
- Where: The Woods at Boldshaves, Woodchurch, Kent, TN26 3RA
- Price: Each session costs £4.50 per child, siblings £3.00, accompanying adults free

Spaces are limited so please book your place by contacting Fran on (07760) 268830 or send an email to babes@forestborn.co.uk

New Member

It's your community information centre!

A Community interest company (a not for profit company) has been formed to run the centre. The Directors are voluntary and any surpluses are invested in Woodchurch parish. Not for profit companies offer a wider section of the local community the chance to oversee the future direction of the centre. Members (individual, group or business) will receive an annual report and can elect directors and hold them to account for the way they run the company.



Windmill Bed & Breakfast

01233 860620 07711 767660

The accommodation includes a family suite consisting of a double and a twin room with an interconnecting door and a private shower room. On the ground floor there is a double room with en-suite (wheelchair friendly). The property is south facing with amazing views.

Chequertree Fishery Bethersden



At Chequertree Fishery, you can stay in a Lakeside Lodge. The log cabin style lodges sleep up to 4 people in beautiful surroundings. They are double glazed and have full central heating. The lodges have a fully fitted, self-contained kitchen and 2 bedrooms. One of the lodges has been constructed to disabled specifications.

Phone: 01233 820078

Lindridge House Woodchurch



Detached cottage in the heart of the Woodchurch Conservation area, with views to the village green. The cottage offers good accommodation for a couple with a child

Telephone 07934 560376

The Old Barn B&B Bethersden



Enjoy bed and breakfast in a converted 18th century listed Kentish Barn with exposed beamed bedrooms and indulge in mouth watering breakfasts.

Telephone. 01233 820434

Stable Cottage Woodchurch



Situated in quiet countryside close to the attractive village of Woodchurch, this hayloft/stable conversion enjoys beautiful views across open countryside.

Telephone. 01233 860388

'Ty Menhir'



Rent a French holiday home in Brittany

www.french-country-cottages.co.uk for availability and bookings.

Telephone: 0870 3367940 to order a brochure

Visit www.tymenhir.com for further information including photos

Woodchurch Tennis Club

- A very sociable club
- Fun and competitive tennis
- Mens, ladies & mixed teams
- All ages welcome
- Coaching available



We would love to find some new members to play in our teams in the Ashford and District Tennis Leagues

Want to find out more?

Call Roger Lightfoot 01233 860522 or Philippa Jones 01233 861486

Or visit www.woodchurchtennisclub.co.uk

Or come along and join in on our club nights on Thursday evenings from 7:00pm to 9:30pm

Bookkeeping, payroll, accounts and tax for small business owners.



Phone us today to find out how we can help you make your business run more smoothly.

We'll make sure your accounts are on time and accurate.

And we'll guarantee you less hassle and no more wasted time struggling with your books.



Call Clare Richardson or Lynsey Kendall.

01233 506203

www.kendallrichardson.co.uk

Trusted to sell these village properties.

